

Metropolis Social Determinants of Health conference

October 2-3, 2023

Palais des congrès de Gatineau (Gatineau Conference Centre), Québec



  @metropolisinst

www.metropolisconference.ca

Conférence Metropolis sur les Déterminants sociaux de la santé

2 et 3 octobre 2023

Palais des congrès de Gatineau, Québec

LESSONS LEARNED AND OPPORTUNITIES: MOVING FORWARD IN THE POST-PANDEMIC ERA

LEÇONS APPRISSES ET OPPORTUNITÉS : AVANCER DANS L'ÈRE POST-PANDÉMIQUE



Statistics
Canada

Statistique
Canada



CHAIR DE RECHERCHE DU CANADA
CHAIRE EN MÉDECINE COMPORTEMENTALE



Messages from the Conference Co-Chairs



Dr. Kim Lavoie

Professor, Chair of Behavioral Medicine,
University of Quebec at Montreal (UQAM)
Tier 1 Canada Research Chair in
Behavioral Medicine/Co-Director,
Montreal Behavioral Medicine Center
(MBMC)

On March 11, 2020, the WHO declared the SARS-Cov-2 virus (the disease that causes COVID-19) a global pandemic, and has arguably been one of the world's most challenging crises since the Second World War. As of March 10, 2023, there were 676,609,955 confirmed cases worldwide, including 4,617,095 in Canada, placing Canada 30th in the world in terms of case number. Canada has recorded 51,720 COVID-19 deaths, which is 22nd highest in the world. The key to slowing the spread of this highly contagious virus and mitigating its health impacts has been rapid implementation of, and widespread public adherence to, the unprecedented and rapidly evolving behaviour-based public health policies (including getting vaccinated) that have been implemented across Canada around the world. Canada has shown exceptional leadership and resilience throughout the pandemic, but many lives were affected and too many lives were lost. The pandemic also disproportionately affected the most disadvantaged in our society, exacerbating previously existing health and social disparities. So many lessons remain to be learned, which will be crucial for optimizing our future pandemic preparedness and protecting the most vulnerable in our society.

On behalf of the Metropolis Conference organizing committee, we would like to extend a warm welcome to all the delegates attending this year's conference, which will bring together multidisciplinary experts to share knowledge, expertise and insights on the Lessons learned from the COVID-19 pandemic: Moving Forward in the Post-Pandemic Era. We are honored to have experts from diverse backgrounds and representing different perspectives and experiences that we hope will provide a rich context for discussion and exchange. The COVID-19 pandemic was much more than a health crisis, it was, and remains, a social crisis that requires we go beyond purely biomedical solutions that may only serve to reinforce existing health and social disparities. We also need to address the wider social, economic, and behavioural challenges that made this pandemic so detrimental to our lives, livelihoods, and well-being. We need to do better, and this starts by being informed, innovative, and inclusive.

We cannot think of a better place to gather for these discussions than the cosmopolitan city of Gatineau, Quebec, which is situated at the intersection of the Ottawa and Gatineau Rivers and which forms part of Canada's Capital Region where so many critical discussions and decisions around the pandemic were made. We are grateful to gather on the traditional territories of the Algonquin Anishinaabe peoples, who were the original inhabitants of this land. It is said that Gatineau's name derives from the Anishinaabemowin Tenagatino Zibi (language of the Algonquin Anishinaabe peoples), and serves as reminder of the region's rich cultural history. Today, Gatineau is home to more than 291,000 people, including 3% who identify as First Nations. This conference represents a unique opportunity for a diverse group of experts and professionals to come together to share learnings and ideas on how to convert the pandemic's legacy from health and social crisis to health and social prosperity. We look forward to hearing your perspectives and exchanging with you all!

Message des coprésidentes de la conférence



Dr. Kim Lavoie

Co-Présidente de la conférence,
Professeur, Chaire de médecine
comportementale, Université du Québec
à Montréal (UQAM) Chaire de recherche
du Canada de niveau 1 en médecine
comportementale/Co-directrice, Centre
de médecine comportementale de
Montréal (CMMB)

Le 11 mars 2020, l'OMS a déclaré que le virus SRAS-Cov-2 (la maladie qui cause le COVID-19) était une pandémie mondiale. Il s'agit sans doute de l'une des crises les plus difficiles à gérer depuis la Seconde Guerre mondiale. Au 10 mars 2023, on comptait 676 609 955 cas confirmés dans le monde, dont 4 617 095 au Canada, ce qui place le pays au 30e rang mondial en termes de nombre de cas. Le Canada a enregistré 51 720 décès dus au COVID-19, ce qui le place au 22e rang mondial. La clé du ralentissement de la propagation de ce virus hautement contagieux et de l'atténuation de ses effets sur la santé a été la mise en œuvre rapide et l'adhésion généralisée du public aux politiques de santé publique fondées sur les comportements (y compris la vaccination), sans précédent et en évolution rapide, qui ont été mises en œuvre dans tout le Canada et dans le monde entier. Le Canada a fait preuve d'un *leadership* et d'une résilience exceptionnels tout au long de la pandémie, mais de nombreuses vies ont été touchées et trop de vies ont été perdues. La pandémie a également touché de manière disproportionnée les personnes les plus défavorisées de notre société, exacerbant les disparités sanitaires et sociales qui existaient déjà. Il reste donc beaucoup de leçons à tirer, qui seront cruciales pour optimiser notre préparation future à la pandémie et protéger les plus vulnérables de notre société.

Au nom du comité organisateur de la conférence Metropolis, nous souhaitons la bienvenue à tous les délégués qui participeront à la conférence de cette année, qui réunira des experts multidisciplinaires pour partager leurs connaissances, leur expertise et leurs idées sur les leçons tirées de la pandémie de COVID-19 : Aller de l'avant dans l'ère post-pandémique. Nous avons l'honneur d'accueillir des experts venant d'horizons divers et représentant des perspectives et des expériences différentes qui, nous l'espérons, fourniront un contexte riche pour la discussion et l'échange. La pandémie de COVID-19 a été bien plus qu'une crise sanitaire, elle a été et reste une crise sociale qui exige que nous allions au-delà des solutions purement biomédicales qui peuvent seulement servir à renforcer les disparités sanitaires et sociales existantes. Nous devons également relever les défis sociaux, économiques et comportementaux plus larges qui ont rendu cette pandémie si préjudiciable à nos vies, à nos moyens de subsistance et à notre bien-être. Nous devons faire mieux, et cela commence par l'information, l'innovation et l'inclusion.

Nous ne pouvons imaginer un meilleur endroit pour se réunir pour ces discussions que la ville cosmopolite de Gatineau, au Québec, qui est située à l'intersection de la rivière des Outaouais et de la rivière Gatineau et qui fait partie de la région de la capitale du Canada, où tant de discussions et de décisions cruciales concernant la pandémie ont été prises. Nous sommes reconnaissants de nous réunir sur les territoires traditionnels des Algonquins Anishinaabe, qui étaient les premiers habitants de cette terre. On dit que le nom de Gatineau dérive de l'Anishinaabemowin Tenagatino Zibi (langue des Algonquins Anishinaabe), et rappelle la riche histoire culturelle de la région. Aujourd'hui, Gatineau compte plus de 291 000 habitants, dont 3 % qui s'identifient aux Premières nations. Cette conférence représente une occasion unique pour un groupe diversifié d'experts et de professionnels de se réunir pour partager leurs connaissances et leurs idées sur la façon de transformer l'héritage de la pandémie d'une crise sanitaire et sociale en une santé et une prospérité sociale. Nous sommes impatients de connaître vos points de vue et d'échanger avec vous tous !

Messages from the Conference Co-Chairs



Josée Bégin

Assistant Chief Statistician, Statistics
Canada, Social, Health and Labour
Statistics, Statistics Canada

As your conference co-chair, it is my great pleasure to welcome you to the Metropolis Conference!

I feel privileged to host this gathering of thought leaders, innovators, and frontline workers. I'm also grateful that we're hosting this event in beautiful Gatineau, and we pay respect to the Anishinaabe Algonquin people who are the traditional guardians of this unceded land.

Despite the herculean efforts of frontline workers during the pandemic, the Canadian healthcare system buckled under the pressure. As we move from a pandemic to an endemic phase, we are still working to address the cracks that were revealed in our system. COVID-19 had a disproportionate impact on racialized people, low-income populations, and other structurally disadvantaged groups—a set of issues that came to a head at the height of the pandemic but are still with us today.

To tackle these problems, we are excited to have delegates of diverse backgrounds who will share their perspectives, findings, and insights gleaned from the pandemic. We encourage you to make the most of this opportunity by posing your questions and discussing strategies to improve public health equity, knowledge, and trust. Let's explore how we can work together to establish a more inclusive and equitable healthcare system.

Message des coprésidentes de la conférence



Josée Bégin

Co-présidente de la conférence,
statisticienne en chef adjoint,
Statistique Canada, Statistique
sociale, de la santé et du travail,
Statistique Canada

En tant que coprésidente de la conférence, j'ai le grand plaisir de vous souhaiter la bienvenue à la conférence Metropolis !

Je me sens privilégiée d'accueillir ce rassemblement de leaders d'opinion, d'innovateurs et de travailleurs de première ligne. Je suis également reconnaissant d'accueillir cet événement dans la belle ville de Gatineau, et nous tenons à rendre hommage au peuple algonquin Anishinaabe qui est le gardien traditionnel de cette terre non cédée.

Malgré les efforts considérables des travailleurs de première ligne pendant la pandémie, le système de santé canadien a plié sous la pression. Alors que nous passons d'une phase pandémique à une phase endémique, nous nous efforçons toujours de remédier aux failles qui ont été révélées dans notre système. Le COVID-19 a eu un impact disproportionné sur les personnes racialisées, les populations à faible revenu et d'autres groupes structurellement défavorisés - un ensemble de problèmes qui ont atteint leur paroxysme au plus fort de la pandémie, mais qui sont encore d'actualité aujourd'hui.

Pour aborder ces problèmes, nous sommes heureux d'accueillir des délégués d'horizons divers qui partageront leurs points de vue, leurs conclusions et leurs connaissances acquises au cours de la pandémie. Nous vous encourageons à tirer le meilleur parti de cette occasion en posant vos questions et en discutant des stratégies visant à améliorer l'équité, les connaissances et la confiance en matière de santé publique. Voyons comment nous pouvons travailler ensemble à la mise en place d'un système de santé plus inclusif et plus équitable.

Welcome message



Jack Jedwab

President and CEO, Metropolis
Institute / Association for
Canadian Studies

Since it was established 25 years ago, the Metropolis Canada conference has become the largest gathering for policy-makers, service providers and researchers on immigration and integration. The many cross-sectoral conversations that take place during Metropolis give rise to new partnerships, projects and ideas. And it was at the spring 2023 Metropolis Conference in Ottawa that the idea emerged to hold an annual forum dedicated to social determinants of health. In effect over the course of the pandemic there was a considerable increase in the number of submissions to the Metropolis Conference that touched on issues of migration and health. Metropolis Social Determinants of Health (MSDH) arose, in large part, from the unprecedented cooperation between social scientists and health scientists in the collection and analysis of data aimed at effectively addressing the challenges encountered by the most vulnerable segments of the population.

We've heard a growing call for more disaggregated data to highlighting the inequities that become very much apparent during the pandemic. As such, the involvement of our Chief Statistician Anil Arora and the very talented team at Statistics Canada was a must in creating MSDH. Not only did they agree to extend their support but they also provided us with the conference co-Chair in assistant Chief Statistician Josée Begin. We're proud to announce that our other conference co-Chair is Professor Kim Lavoie, Chair of Behavioral Medicine, University of Quebec at Montreal (UQAM). Kim and her team made a significant contribution to data collection and analysis over the course of the pandemic and we're very grateful that she accepted to act as the co-Chair for the inaugural edition of MSDH.

There have been valuable lessons arising from the pandemic and it is critical to properly evaluate what went well and what went wrong so as to be best equipped to deal with such crises as we collectively go forward. Ideally, this first edition of MSDH can make a modest contribution in this regard.

When we released the MSDH call for proposals we anticipated getting 20 submissions. The projection was wrong as we received more than 50 submissions thereby validating the need for this platform.

Thanks as always to the dedicated team at the Metropolis Institute for making MSDH happen and in particular to James Ondrick, Emma Proux and Shania Bramble. Your efforts are very much appreciated.

Wishing everyone productive deliberations.

Message de bienvenue



Jack Jedwab

Président-directeur général,
Institut Metropolis / Association
d'études canadiennes

Depuis sa création il y a 25 ans, le congrès Metropolis Canada est devenue le plus grand rassemblement de décideurs politiques, de prestataires de services et de chercheurs en matière d'immigration et d'intégration. Les nombreuses conversations intersectorielles qui ont lieu pendant Metropolis donnent lieu à de nouveaux partenariats, projets et idées. Et c'est lors du congrès Metropolis du printemps 2023 à Ottawa qu'est née l'idée d'organiser un forum annuel consacré aux déterminants sociaux de la santé. En effet, au cours de la pandémie, le nombre de soumissions à la conférence Metropolis portant sur les questions de migration et de santé a considérablement augmenté. Les déterminants sociaux de la santé de Metropolis (MSDH) sont nés, en grande partie, de la coopération sans précédent entre les spécialistes des sciences sociales et les spécialistes de la santé dans la collecte et l'analyse de données visant à relever efficacement les défis auxquels sont confrontés les segments les plus vulnérables de la population.

Nous avons entendu un appel de plus en plus pressant en faveur de données plus désagrégées pour mettre en évidence les inégalités qui deviennent très apparentes pendant la pandémie. L'implication de notre statisticien en chef, Anil Arora, et de l'équipe très talentueuse de Statistique Canada était donc indispensable à la création de MSDH. Non seulement ils ont accepté d'apporter leur soutien, mais ils nous ont également fourni la coprésidente de la conférence, Josée Begin, statisticienne en chef adjointe. Nous sommes fiers d'annoncer que l'autre coprésident de la conférence est la professeure Kim Lavoie, titulaire de la chaire de médecine comportementale de l'Université de Montréal. Kim et son équipe ont apporté une contribution significative à la collecte et à l'analyse des données tout au long de la pandémie et nous lui sommes très reconnaissants d'avoir accepté d'assurer la coprésidence de l'édition inaugurale de la MSDH.

La pandémie a permis de tirer des enseignements précieux et il est essentiel d'évaluer correctement ce qui a bien fonctionné et ce qui a mal fonctionné afin d'être le mieux préparé possible pour faire face à de telles crises à mesure que nous avançons collectivement. Idéalement, cette première édition de la MSDH peut apporter une modeste contribution à cet égard.

Lorsque nous avons lancé l'appel à propositions pour la MSDH, nous nous attendions à recevoir 20 propositions. Cette prévision s'est avérée fautive puisque nous avons reçu plus de 50 propositions, ce qui confirme la nécessité de cette plateforme.

Nous remercions comme toujours l'équipe dévouée de l'Institut Metropolis qui a permis à la MSDH de voir le jour, et en particulier James Ondrick, Emma Proux et Shania Bramble. Vos efforts sont très appréciés.

Je souhaite à tous des délibérations productives.

Biographies

Dr. Kim Lavoie is a Full Professor in the Department of Psychology at the Université du Québec à Montréal (UQAM) and holds a Tier 1 Canada Research Chair in Behavioural Medicine. She is the former Director of the Chronic Disease Research Division at the Hôpital du Sacré-Coeur de Montréal and current Co-Director of the Montreal Behavioural Medicine Centre. She holds a number of national and international leadership positions including Co-Lead of the International Behavioural Trials Network and Chair of the Canadian Network for Health Behaviour Change and is a member of the Canadian Expert Advisory Panel for COVID-19. Dr. Lavoie is internationally recognized for her research on chronic disease prevention and the impact of behavioural interventions such as motivational communication on health behaviours and chronic disease outcomes.

Kim Lavoie est professeure titulaire au département de psychologie de l'Université du Québec à Montréal (UQAM) et titulaire d'une chaire de recherche du Canada de niveau 1 en médecine comportementale. Elle est l'ancienne directrice de la Division de recherche sur les maladies chroniques de l'Hôpital du Sacré-Cœur de Montréal et l'actuelle codirectrice du Centre de médecine comportementale de Montréal. Elle occupe plusieurs postes de direction au niveau national et international, dont celui de codirectrice de l'International Behavioural Trials Network et de présidente du Réseau canadien pour le changement des comportements de santé. Elle est également membre du groupe consultatif d'experts canadiens pour le COVID-19. Dr Lavoie est reconnue internationalement pour ses recherches sur la prévention des maladies chroniques et l'impact des interventions comportementales telles que la communication motivationnelle sur les comportements de santé et les résultats des maladies chroniques.



DR KIM LAVOIE

Biographies

Josée Bégin is the Assistant Chief Statistician in the Social, Health and Labour Statistics Field. Bégin holds a Master's degree in Mathematics and Statistics (MSc) from the University of Ottawa. She began her career with the Canada Revenue Agency in 1994 before joining Statistics Canada in 2002, where she gained experience in supervising large and complex statistical programs. Josée became Assistant Chief Statistician of the Social, Health and Labour Statistics Sector at Statistics Canada in January 2023.



JOSÉE BÉGIN

Josée Bégin est la Statisticienne en chef adjointe, Secteur de la statistique sociale, de la santé et du travail. Bégin est titulaire d'une maîtrise en mathématiques et statistiques (MSc) de l'Université d'Ottawa. Elle a commencé sa carrière à l'Agence du revenu du Canada en 1994 avant de se joindre à Statistique Canada en 2002, où elle a acquis de l'expérience dans la supervision de programmes statistiques vastes et complexes. Josée est devenue statisticienne en chef adjointe du secteur de la statistique sociale, de la santé et du travail à Statistique Canada en janvier 2023.

Biographies



**DR PHILIPPE COUILLARD,
MD**

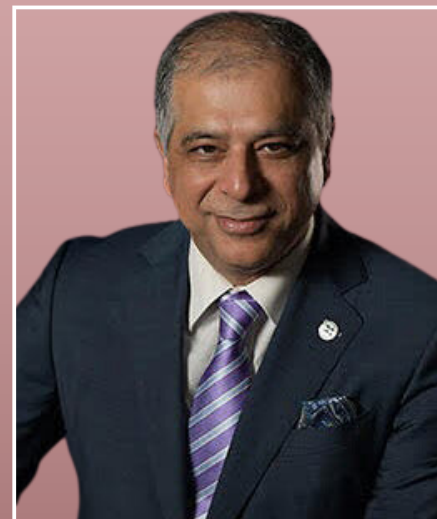
31ST PREMIER OF QUEBEC |
31^{ÈME} PREMIÈRE DE QUÉBEC
2014-2018

Dr. Philippe Couillard is a former Premier of Québec and former Quebec Minister of Health. Dr. Couillard went to medical school and obtained his specialization at the University of Montreal. Certified in 1985, he practiced neurosurgery in Montreal and in the Middle East from 1985 to 1996 and at the University of Sherbrooke until 2003. In 2003, he was named Head of the Department of Surgery of the university hospital and served as a member of the Council of the Royal College of Physicians and Surgeons of Canada. Elected to Quebec's National Assembly in 2003 and again in 2007, he was Quebec's Minister of Health and Social Services until June 2008. During his mandate, Dr. Couillard directed numerous reforms of Quebec's healthcare system and implemented the province's medication policy in 2007.

Dr Philippe Couillard est un ancien Premier ministre du Québec et un ancien ministre de la Santé du Québec. Dr Couillard a fait ses études de médecine et obtenu sa spécialisation à l'Université de Montréal. Agréé en 1985, il a pratiqué la neurochirurgie à Montréal et au Moyen-Orient de 1985 à 1996 et à l'Université de Sherbrooke jusqu'en 2003. En 2003, il est nommé chef du département de chirurgie du centre hospitalier universitaire et siège au conseil du Collège royal des médecins et chirurgiens du Canada. Élu à l'Assemblée nationale du Québec en 2003, puis en 2007, il a été ministre de la Santé et des Services sociaux du Québec jusqu'en juin 2008. Au cours de son mandat, Dr Couillard a dirigé de nombreuses réformes du système de santé du Québec et a mis en œuvre la politique du médicament de la province en 2007.

Biographies

Anil Arora was appointed Chief Statistician of Canada in September 2016. Arora has led significant transformational initiatives throughout his career, with experience and partnerships spanning all three levels of government, the private sector and international organizations, including the UN and the OECD. He has led projects on high-profile policy issues, legislative and regulatory reform, and overseen large national programs. Arora joined Statistics Canada where he served in several positions, including regional operations, corporate services and the redesign of the dissemination function. In 2000, he became Director of Census Management Office and subsequently the Director General responsible for all aspects of the 2006 Census. In this role, Arora led the most comprehensive redesign of the Program, including the introduction of an online questionnaire.



ANIL ARORA

Anil Arora a été nommé statisticien en chef du Canada en septembre 2016. Tout au long de sa carrière, Anil Arora a mené d'importantes initiatives de transformation, avec une expérience et des partenariats couvrant les trois niveaux de gouvernement, le secteur privé et les organisations internationales, y compris l'ONU et l'OCDE. Il a dirigé des projets sur des questions politiques de premier plan, des réformes législatives et réglementaires, et a supervisé d'importants programmes nationaux. M. Arora a rejoint Statistique Canada, où il a occupé plusieurs postes, notamment dans les domaines des opérations régionales, des services généraux et de la refonte de la fonction de diffusion. En 2000, il est devenu directeur du Bureau de gestion du recensement, puis directeur général responsable de tous les aspects du recensement de 2006. À ce titre, M. Arora a dirigé la refonte la plus complète du programme, y compris l'introduction d'un questionnaire en ligne.

Biographies



JACK JEDWAB

Jack is President and CEO of the Association for Canadian Studies and the Metropolis Institute. He holds a Ph.D. in Canadian History from Concordia University. Prior to 1998, he served as executive director of the Quebec branch of the Canadian Jewish Congress. He is an author and contributor to academic publications, government reports and newspapers across the country in the fields of immigration, multiculturalism, diversity, human rights and official languages. Following three decades of wide-ranging research on public opinion and demographics, he is regularly consulted by media and government bodies alike for his expertise and insights on issues of import in the public sphere. He has taught and lectured at McGill University, the Université du Québec à Montréal and Concordia University, offering courses ranging from public policy to the history of immigration and minority groups, to sports in Canada.

Jack est président et directeur général de l'Association d'études canadiennes et de l'Institut Metropolis. Il est titulaire d'un doctorat en histoire canadienne de l'université Concordia. Avant 1998, il a été directeur exécutif de la branche québécoise du Congrès juif canadien. Il est auteur et collaborateur de publications universitaires, de rapports gouvernementaux et de journaux publiés dans tout le pays dans les domaines de l'immigration, du multiculturalisme, de la diversité, des droits de l'Homme et des langues officielles. Après trois décennies de recherches approfondies sur l'opinion publique et la démographie, il est régulièrement consulté par les médias et les organismes gouvernementaux pour son expertise et ses analyses sur les questions importantes de la sphère publique. Il a enseigné et donné des conférences à l'Université McGill, à l'Université du Québec à Montréal et à l'Université Concordia, offrant des cours allant de la politique publique à l'histoire de l'immigration et des groupes minoritaires, en passant par le sport au Canada.

Biographies

Dr. Joanne Liu is a veteran humanitarian aid worker and a Canadian practicing paediatric emergency physician. Dr. Liu professor at McGill University's School of Population & Global Health where she focuses on pandemic and health emergencies at the Pandemics and Health Emergency Readiness Lab (PERL). Prior to joining McGill, Dr. Liu began her career with Médecins Sans Frontières/Doctors Without Borders (MSF) in 1996 and went on to serve as the International President of MSF for over six years from 2013-2019. Through her leadership, she spearheaded the emergency responses to humanitarian and health emergencies including outbreaks/epidemics in West (Ebola 2014-2016) and Central Africa, Middle East, Central Asia, South East Asia, Caribbean & Central America.

Dr Joanne Liu, qui détient une carrière remarquable dans l'humanitaire, est un médecin pédiatre d'urgence pratiquant au Canada. Dr Liu enseigne à l'École de santé publique et mondiale de l'Université McGill, où elle se concentre sur les pandémies et les urgences sanitaires au sein du laboratoire de préparation aux pandémies et aux urgences sanitaires (PERL). Avant de rejoindre McGill, Dr Liu a commencé sa carrière avec Médecins Sans Frontières/Doctors Without Borders (MSF) en 1996 et a été présidente internationale de MSF pendant plus de six ans, de 2013 à 2019. Grâce à son leadership, elle a dirigé les réponses aux urgences humanitaires et sanitaires, y compris les épidémies en Afrique de l'Ouest (Ebola 2014-2016) et centrale, au Moyen-Orient, en Asie centrale, en Asie du Sud-Est, dans les Caraïbes et en Amérique centrale.



DR. JOANNE LIU, MD

Biographies



DR. SIMON BACON

Dr. Simon Bacon is a Professor in the Department of Health, Kinesiology & Applied Physiology at Concordia University. Dr. Bacon sits on the CIHR SPOR Chair in Innovative, Patient-Oriented, Behavioural Clinical Trials and FRQS Co-Chair in Artificial Intelligence and Digital Health for Health Behaviour Change, Department of Health, Kinesiology, and Applied Physiology, Concordia University

Dr. Bacon has won research awards from the Canadian Hypertension Society, Canadian Institutes of Health Research, McGill University, National Institutes of Health (US), European Society of Hypertension, and International Society of Psychoneuroendocrinology. Prior to joining Concordia he completed his postdoctoral studies at the Duke University Medical Center, McGill University, Hôpital du Sacré-Coeur de Montréal, and the Montreal Heart Institute.

Simon Bacon est professeur au Département de santé, de kinésiologie et de physiologie appliquée de l'Université Concordia. Dr Bacon est membre de la chaire SPOR des IRSC sur les essais cliniques comportementaux novateurs axés sur le patient et de la chaire FRQS sur l'intelligence artificielle et la santé numérique pour le changement des comportements de santé, au département de santé, de kinésiologie et de physiologie appliquée de l'Université Concordia.

Dr Bacon a reçu des prix de recherche de la Société canadienne d'hypertension artérielle, des Instituts de recherche en santé du Canada, de l'Université McGill, des National Institutes of Health (États-Unis), de la Société européenne d'hypertension artérielle et de la Société internationale de psychoneuroendocrinologie. Avant de se joindre à Concordia, il a effectué ses études postdoctorales au Duke University Medical Center, à l'Université McGill, à l'Hôpital du Sacré-Coeur de Montréal et à l'Institut de cardiologie de Montréal.

Conference Organizing Committee Members

Membres du comité d'organisation de la conférence

Kim Lavoie

Université du Québec à Montréal (UQAM)

Josée Bégin

Statistics Canada

Simon Bacon

Concordia University

Jill Hanley

McGill University

Lori Wilkinson

University of Manitoba

John Shields

Toronto Metropolitan University

Julie Stratton

Statistics Canada / Statistique Canada

Annie Pontbraind

Sherpa- Institut Universitaire (CIUSSS Centre-Ouest-de-l'île-de-Montréal)

Sarah Bonnell

Public Health Agency of Canada / L'Agence de la santé publique du Canada

Staff

Jack Jedwab

ACS-Metropolis

James Ondrick

ACS-Metropolis

Valentina Antonipillai

McMaster University

Andrew Tomayer

Childrens Hospital of Eastern Ontario (CHEO) /
N4 national Newcomer Navigation Network /
Réseau National de Navigation Pour Nos
Nouveaux Arrivants

Valerie Ann Preston

York University

Anna Goudet

ENAP: École nationale d'administration
publique

Lara Maillet

ENAP: École nationale d'administration
publique

Catherine Penny

Childrens Hospital of Eastern Ontario (CHEO) /
N4 national Newcomer Navigation Network /
Réseau National de Navigation Pour Nos
Nouveaux Arrivants

Deidre Lake

Alberta International Medical Graduates
Association (AIMGA)

Hindia Mohamoud

Ottawa Local Immigration partnership

Emma Proux

ACS-Metropolis

Shania Bramble

ACS-Metropolis

Conference Partners

Partenaires de la conférence

- L'institut Universitaire SHERPA / Sherpa University Institute
- Canadian Behavioral Interventions and Trials Network (CBITN) / Réseau canadien pour les interventions et essais comportementaux (RCIEC)
- iCARE Study - International COVID-19 Awareness and Responses Evaluation Study / L'étude iCARE - Étude internationale d'évaluation de la sensibilisation et des réponses au COVID-19
- Association for Canadian Studies/Metropolis Institute / Association detudes canadiennes / Institut Metropolis
- Nunavut Tunngavik
- Statistics Canada / Statistiques Canada

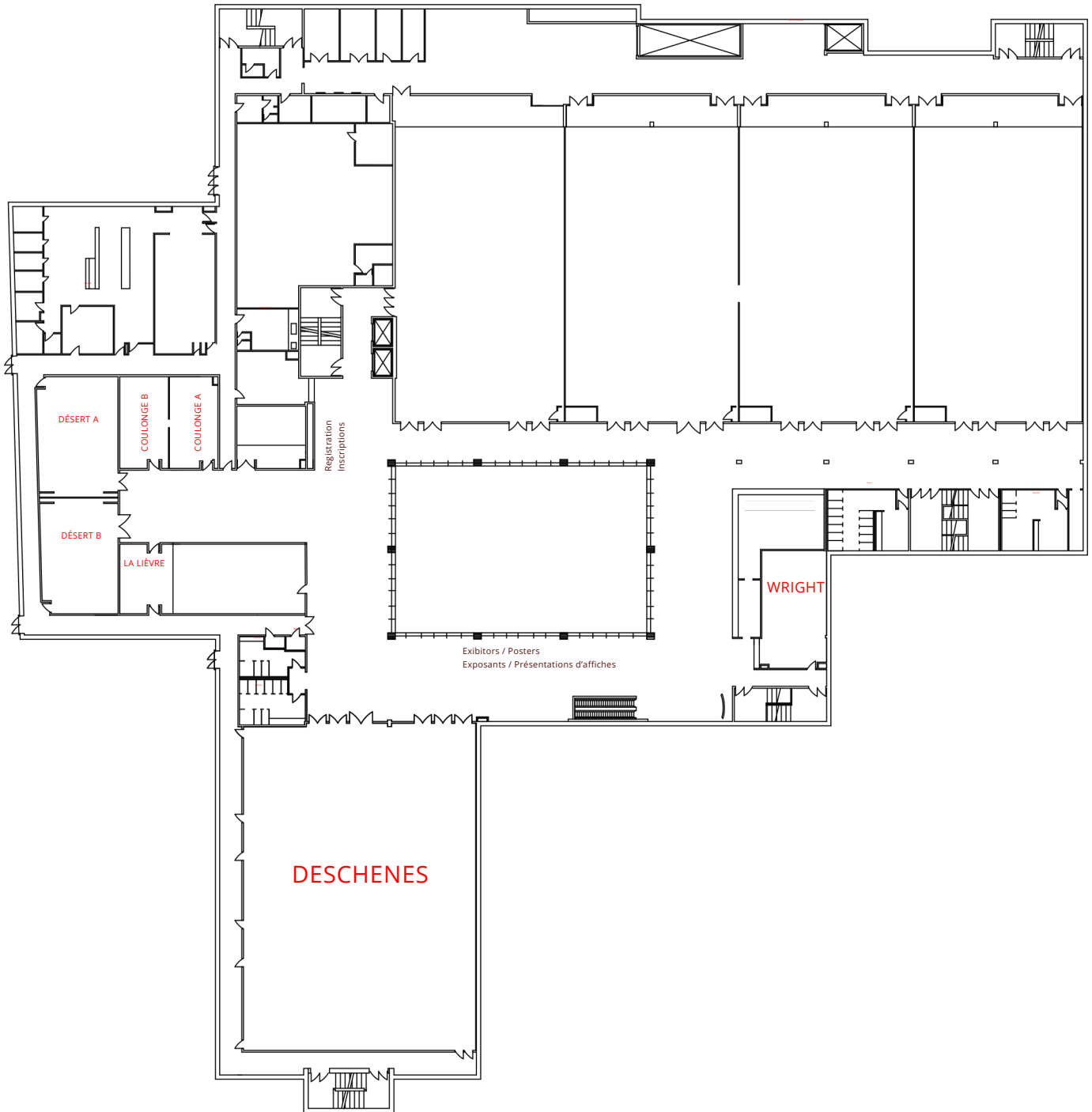
Conference Exhibitors

Exposants de la conférence

- L'institut Universitaire SHERPA / Sherpa University Institute
- Centre d'expertise sur le bien-être et l'état de santé physique des réfugiés et des demandeurs d'asile (CERDA)
- N4 - National Newcomer Navigation Network / Réseau national de navigation pour les nouveaux arrivants (N4)
- National Collaborating Centre for Healthy Public Policy (NCCHPP) / Centre de collaboration nationale sur les politiques publiques et la santé (CCNPPS)
- Canadian Behavioral Interventions and Trials Network (CBITN) / Réseau canadien pour les interventions et essais comportementaux (RCIEC)
- iCARE Study - International COVID-19 Awareness and Responses Evaluation Study / L'étude iCARE - Étude internationale d'évaluation de la sensibilisation et des réponses au COVID-19
- Statistics Canada / Statistiques Canada

Palais des congrès map

Plan du Palais des Congrès



Titles and information regarding all sessions appear in the official language they were submitted in by the workshop organizer.

Please note all poster presentations are listed at the end of the program as they run through the entirety of the conference.

Les titres et les informations concernant toutes les séances apparaissent dans la langue officielle dans laquelle ils ont été soumis par l'organisateur de la présentation

Veillez noter que toutes les présentations d'affiches sont listées à la fin du programme car elles sont exposées tout au long du congrès.

CONNECTING SHELTER AND WELL-BEING: EXPLORING THE INTERSECTION OF HOUSING AND HEALTH IN NUNAVUT



Learn about the impact of the housing crisis at the community level
Explore the relationship between housing and health outcomes through the data
Discuss the lessons learned and what is being done to develop sustainable solutions.

Moderator:

Tim Brown, Assistant Director, Policy and Planning, Nunavut Tunngavik Incorporated

Presenters:

Cecille Lyall, Housing and Homelessness Policy Analyst, Nunavut Tunngavik Incorporated
Christy Sinclair, Infrastructure Policy Analyst, Nunavut Tunngavik Incorporated:
Paul Holley, Research Director, Association for Canadian Studies - Metropolis Institute

E1 | Wright (Gatineau Convention Centre) 1:30 PM- 2:45PM
October 3, 2023

RELIER LE LOGEMENT ET LE BIEN-ÊTRE : EXPLORER L'INTERSECTION ENTRE LOGEMENT ET SANTÉ AU NUNAVUT



Découvrez l'impact de la crise du logement au niveau communautaire
Explorez la relation entre le logement et les résultats en matière de santé grâce aux données
Discutez des leçons apprises et de ce qui est fait pour développer des solutions durables

Modérateur:

Tim Brown, directeur adjoint, Politiques et planification, Nunavut Tunngavik Incorporated

Panélistes:

Cecille Lyall, analyste des politiques en matière de logement et d'itinérance, Nunavut Tunngavik Incorporated

Christy Sinclair, analyste des politiques d'infrastructure, Nunavut Tunngavik Incorporated

Paul Holley, directeur de recherche, Association d'études canadiennes - Institut Metropolis

E1 | Wright (Centre de Congrès Gatineau) 13:30 - 14:45

3 Octobre 2023

As of / À partir de 7:30 am

Registration / Visit the Exhibitors and Poster Presentations
Inscriptions / Visite des Kiosques des exposants et des Présentations d'affiches



in front of the Deschenes room /
devant la salle Deschenes

9:00 - 10:30 am**Opening Remarks / Remarques Préliminaires**

Deschenes

Opening Remarks / Remarques Préliminaires

- **Kim Lavoie**, Conference Co-Chair, Professor, Chair of Behavioral Medicine, University of Quebec at Montreal (UQAM) Tier 1 Canada Research Chair in Behavioral Medicine/Co-Director, Montreal Behavioral Medicine Center (MBMC) / Co-Présidente de la conférence, Professeur, Chaire de médecine comportementale, Université du Québec à Montréal (UQAM) Chaire de recherche du Canada de niveau 1 en médecine comportementale/Co-directrice, Centre de médecine comportementale de Montréal (CMMB)
- **Josée Bégin**, Conference Co-Chair, Assistant Chief Statistician, Statistics Canada, Social, Health and Labour Statistics, Statistics Canada / Co-présidente de la conférence, statisticienne en chef adjoint, Statistique Canada, Statistique sociale, de la santé et du travail, Statistique Canada

Opening Speakers / Les Orateurs d'Ouverture

- **Dr Philippe Couillard**, former Premier of Québec and former Quebec Minister of Health / Ancien Premier ministre du Québec et ancien ministre de la Santé du Québec
- **Anil Arora**, Chief Statistician of Canada, *The Challenge of Data Collection and Analysis during the Pandemic and Lessons Going Forward* / Statisticien en chef du Canada, *Le défi de la collecte et de l'analyse des données pendant la pandémie et les leçons pour l'avenir*

10:30 - 11:00 am**Break/Pause**

Visit the Exhibitors and Poster Presentations
Visite des Kiosques des exposants et des Présentations d'affiches



in front of the Deschenes room /
devant la salle Deschenes

11:00 - 12:15 pm**Block A / Bloc A****Concurrent sessions (workshops and roundtables)****Séances simultanées (ateliers et tables rondes)**

Block A / Bloc A**A1 - Workshop - Panel Presentation / Atelier - Présentation en panel**

Coulonge B

Community and public health partnerships: Lessons learned from Calgary area COVID-19 vaccine responses

In Calgary, several novel partnerships were developed in response to COVID-19 outbreaks and later the need for accessible vaccine services within newcomer communities. This panel will present key findings from a multi-partner research project (led by the University of Calgary, Cumming School of Medicine and including CCIS, AIMGA, and Mosaic Refugee Health Clinic) exploring vaccine hesitancy and access among refugees and other newcomers in Calgary. The panel will explore the role of community partners and Internationally-trained Medical Graduates in creating a more culturally responsive system of care, with a focus on key learnings for healthcare professionals, service providers, and policy makers.

- **Laurent Wall**, Habitus Consulting Collective, Culturally responsive systems of care and the experiences
- **Deidre Lake**, Alberta International Medical Graduates Association, IMGs and culturally responsive systems of care
- **Annalee Coakley**, Mosaic Refugee Health Clinic, Public health and newcomer systems of care

Block A / Bloque A**A2 - Workshop - Panel Presentation / Atelier - Présentation en panel**

Coulonge A

Part of the Solution: Addressing Canada's Health Human Resource Crisis by Promoting Optimal Employment of Internationally Educated Health Professionals (IEHPs)

The on-going impact of the pandemic has catapulted the health care sector into unprecedented job vacancy rates. Despite the skills and years of experience Internationally Educated Nurses (IENs) and Internationally Trained Physicians (ITPs) bring to Canada, less than 40% are employed in their profession. The pathway from immigration to employment is fraught with systemic barriers and bias. This workshop will present concrete and actionable recommendations for the systemic change needed to create equity for IEHPs. At a time where nurses and physicians are highly needed, it is critical that Canada adopt innovative approaches that respect the skills of IEHPs.

- **Mariah Maddock**, N4 - National Newcomer Navigation Network
- **Sahar Zohni**, N4 - National Newcomer Navigation Network

Block A / Bloque A**A3 - Workshop - Panel Presentation / Atelier - Présentation en panel**

Deschenes

Health Inequalities in Public Health Crises: How COVID-19 Impacted Existing Inequalities

The COVID-19 pandemic exposed and exacerbated health inequalities by disproportionately affecting underserved populations, resulting in syndemic conditions. This review aims to explore the impact of COVID-19 on health inequalities, highlights the burden faced by these communities, and explores the interconnectedness of the social determinants of health. By looking at the interplay between existing inequalities and the pandemic, our presentation argues that addressing health inequalities requires comprehensive, intersectional approaches that tackle underlying structural disparities. The findings emphasize the need for comprehensive policy strategies to mitigate the complex interaction between future crises and existing inequalities.

- **Willy Dunbar**, National Collaborating Centre for Healthy Public Policy (NCCHPP)
- **Val Morrison**, National Collaborating Centre for Healthy Public Policy (NCCHPP)

Community Based Approaches as best practice in anti-racist program development

Community-based and community-led approaches are central to program delivery at SERC. For over 15 years SERC has worked with immigrant, refugee, and new-comer communities to develop, implement, evaluate and continually improve educational programs related to sexual and reproductive health. By discussing barriers, access and rights affected by services and policies in micro and macro levels, SERC addresses social determinants of health, including pandemic and post-pandemic issues. This roundtable will provide an overview of SERC's award-winner community-based approaches, evidence of strengths of this approach and provide a programming example of community-based approaches as best practice in anti-racist and anti-oppressive program development.

- **Simret Daniel**, Program Coordinator

Block A / Bloc A**A4- Roundtable / Table ronde**

Desert A

Reimagining Compassionate Healthcare for Immigrants: Lessons learned from Virtual Care

During the COVID-19 pandemic, virtual care (especially via video and telephone) became the predominant modality for primary health services. Many organisations reorganised quickly to ensure continuity of quality care to Newcomers. This roundtable is a structured informal dialogue on how the human touch and compassion in health care can be prioritized for newcomers and refugees considering increased technological complexity and limited resources. The discussion will also share what we have learnt working together to understand digital health compassion and the opportunities that technology presents for equitable and responsive service delivery.

- Session Moderator / Chair: **Ibukun Abejirinde**, Women's College Hospital Research Institute
- **Diana Gallego**, FCJ Refugee Centre, Toronto, Unique perspectives on virtual care service delivery for precarious migrants
- **Mohaddesa Khawari**, Access Alliance Multicultural Health and Community Services, Toronto, Community Partnerships to advance research and practice on migrant health and primary care
- **Semhar Musael**, Crossroads Clinic, Toronto, Enhancing newcomers' access to care in the digital era
- **Marlena Dang Nguyen**, Women's College Hospital Institute for Health System Solutions and Virtual Care, Newcomers' experiences of virtual care during the COVID-19 pandemic: an intersectionality informed analysis

Block A / Bloc A**A5 - Workshop - Panel Presentation / Atelier - Présentation en panel**

Lievre

Enhancing Occupational Health and Safety for New Immigrant Workers in Alberta: Insights and Strategies

This workshop focuses on occupational health and safety for new immigrant workers in Alberta. The presentations cover four subtopics: (1) A study examining work challenges faced by new immigrant workers and their impact on health and well-being; (2) Immigrants' experiences of psychological hazards at workplaces and their coping strategies for improving psychological safety; (3) Comparisons between occupational health and safety experiences of new immigrant and Canadian-born workers, proposing a training program for stakeholders; and (4) Demonstration of a Participatory Action Research developing learning materials to support new immigrant workers' understanding of OHS in Canadian workplaces, with input from those with lived experience.

- **Janki Shankar**, University of Calgary, Mental health challenges experienced by new immigrant workers / Post injury experiences of new immigrant and Canadian born workers
- **Shu-Ping Chen**, University of Alberta, Immigrant workers' experience of psychological hazard: What are their coping strategies? / Participatory Action Research: A tool for developing occupational health and safety education with new immigrant workers

Block A / Bloc A A**A6 - Roundtable / Table ronde**

Wright

The Social Determinants of Migrant Worker Health in Ontario: Looking Ahead in the post-Pandemic Era

Migrant agricultural workers (MAWs) in Ontario encounter many challenges in protecting their health and accessing related services. Drawing on workers' experiences prior to, and continuing from, the COVID-19 pandemic, this roundtable discussion seeks to elucidate systemic issues and generate ideas for improving access to services.

- **Susana Caxaj**, University of Western Ontario
- **Stephanie Mayell**, University of Toronto
- **Gabriel Allahdua**, Partnered Research Evaluating Services for Migrants in Agriculture (PRESMA)

Block A / Bloc A**A7 - Workshop - Panel Presentation / Atelier - Présentation en panel**

Desert B

Obstacles aux soins de santé pour les personnes réfugiées et en demande d'asile : l'exemple du Québec et les pistes de solutions

Au Canada, les personnes réfugiées et en demande d'asile bénéficient d'une couverture santé dans le cadre du Programme fédéral de Santé intérimaire (PFSI). Elles éprouvent néanmoins des difficultés d'accès aux soins de santé et aux services sociaux, notamment puisque peu de professionnels et d'établissements de santé sont enregistrés comme fournisseurs de soins PFSI. Cette présentation explore les défis et les obstacles auxquels ces personnes sont confrontées pour accéder aux services de santé au Québec et les conséquences de cette situation. Elle présente un dossier thématique développé par le CERDA, l'IU-SHERPA et le PRAIDA ainsi que ses potentielles retombées sur l'amélioration du continuum de soins des réfugiés et demandeurs d'asile.

- **Noémie Trosseille**, CERDA, CIUSSS-COMTL
- **Geneviève Minville**, CERDA, CIUSSS-COMTL
- **Mélanie M. Gagnon**, CERDA, CIUSSS-COMTL

RÉAC! Réactivité de la prise en charge des nouveaux arrivants face à la pandémie de COVID-19 à Montréal, Sherbrooke et Toronto : une recherche participative

Cette étude explore la réactivité des initiatives intersectorielles selon des fournisseurs, et des usagers de services (réfugiés, demandeurs d'asile et migrants sans statut arrivés au Canada entre 2016 et 2021). Les données proviennent d'entrevues avec des fournisseurs de services et des décideurs (n = 80), avec des usagers de services, et de 21 groupes de discussion (n = 81) avec des usagers de services à Toronto, Montréal et Sherbrooke. Les thèmes émergents étaient l'attention portée aux priorités non liées à la COVID 19, c'est-à-dire les besoins sociaux, l'accès aux services de soins, la continuité des services. Les expériences des participants ont mis en lumière la façon dont les initiatives intersectorielles peuvent être améliorées.

- **Armel Ouffouet**, Université de Montréal
- **Émilie Perrault**, Université de Montréal

12:15 - 1:30 pm

Lunch / Diner



Deschenes

1:30 - 2:45 pm

Block B / Bloc B

Concurrent sessions (workshops and roundtables)

Séances simultanées (ateliers et tables rondes)

Block B / Bloc B

B1 - workshops / talleres



Coulonge A

A success story: How a Community Health Centre helped navigate the 1st COVID outbreak in an Ontario

March 2020, the world collectively was thrust into a global pandemic. It was a collective journey that no one asked for and resulted in challenging all aspects of our way of life. In April 2020, Nellie's was the first Violence Against Women (VAW) in Ontario to have a COVID outbreak. This session will outline how a nebulous relationship between South Riverdale Community Health Centre and Nellie's resulted in a road map to manage a global pandemic in the East Toronto Community.

- **Jyoti Singh**, Nellie's, VAW shelter.
- **Jason Altenberg**, South Riverdale Community Health Centre

Block B / Bloc B

B2 Workshop - Panel Presentation / Atelier - Présentation en panel



Coulonge B

Using a social determinants of health framework to understand post-pandemic outcomes among newcomers

One way to interpret the COVID-19 pandemic and its long-term influence on social, economic and mental health outcomes among newcomers is to use the Social Determinants of Health framework (SDHF). Papers in this session focus on the influence of SDH indicators on various aspects related to newcomer health and wellbeing with a specific interest in identifying the factors that influence myth beliefs and the experience of racism.

- **Jack Jedwab**, ACS-Metropolis Institute
- **Lori Wilkinson**, University of Manitoba
- **Nikol Veisman**, Carleton University

Block B / Bloc B

B3 Workshop - Panel Presentation / Atelier - Présentation en panel



Deschenes

Occupational Health and Safety for Im/Migrant Workers

The COVID crisis underscored how im/migrant workers are "essential" to Canada's socio-economic wellbeing yet also subjected to the most dangerous conditions of occupational health and safety. In this roundtable, 3 projects will be presented: CoVivre's concerted action (public-community) to protect migrant worker OHS during COVID; IU SHERPA's initiative to train frontline workers to better protect the rights of sick and injured migrant workers; and an action research project on the possibility of "return to work" after occupational illness or injury for migrant workers. Participants will be invited to engage in collective reflection on the measures that might better protect the OHS of migrant workers, sharing local initiatives and strategies

- Session Moderator / Chair: **Jill Hanley**, McGill University & IU SHERPA
- **Emmanuelle Bolduc**, CoVivre, Concerted action to protect im/migrant workers OHS during the COVID crisis: the CoVivre project
- **Lucio Castracani**, IU SHERPA, Access to Frontline Healthcare for Migrant Workers: a training for healthcare providers
- **Pankil Goswami**, McGill University, Return to Work after Occupational Injury: Hurdles for Migrant Workers
- **Guillermo Ventura Sanchez**, Concordia University, Return to Work after Occupational Injury: Hurdles for Migrant Workers

Block B / Bloc B

B4 Roundtable / Table ronde



Lievre

Adapter les services par, avec et pour les jeunes de la diversité

En croisant les perspectives de différents acteurs œuvrant auprès des jeunes de la diversité, cette table ronde vise à mettre en lumière les apprentissages tirés de la pandémie et à dégager des pistes de réflexion et d'action, notamment quant aux forces et vulnérabilités spécifiques de ces jeunes et leur accès à des services culturellement pertinents et adaptés par, avec et pour ces jeunes, avec une approche holistique qui prend en compte l'environnement du jeune, son histoire et son parcours.

- Modératrices : **Naïma Bentayeb**, IU SHERPA; ENAP; McGill ET Janique Johnson-Lafleur, IU SHERPA; McGill
- **Adina Ungureanu**, ACCÉSSS
- **Amy Bilodeau**, CHSSN
- **Joël Poirier**, CIUSSS du Centre-Ouest-de-L'Île-de-Montréal
- **Gabriel Demers**, Université Laval

Block B / Bloc B**B5** Roundtable / Table ronde

Wright

Access to health for the uninsured: reflections from Manitoba, Ontario and Quebec

Community advocates and researchers have long sought to improve access to health care for the medically uninsured. A range of immigration situations (e.g., undocumented, 3-month delay for Medicare) can lead to major barriers in access to care or crushing debt. During the pandemic, most provinces temporarily instituted partial or full access to health care for the uninsured. In this roundtable, 3 community-engaged researchers will share their assessment of the changes during the pandemic and analyze the latest developments in access to care for the uninsured. Participants will be invited to share experiences and strategies to increase access to health care for the uninsured across Canada.

- Session Moderator / Chair: **Andréanne Dufour**, IU SHERPA
- **Janet Cleveland**, IU SHERPA, Lessons and new developments in access to health for the uninsured in Quebec
- **Lindsay Larios**, University of Manitoba, Lessons and new developments in access to health for the uninsured in Manitoba
- **Catherine Schmidt**, University of Toronto, Lessons and new developments in access to health for the uninsured in Ontario

Block B / Bloc B**B6** - Roundtable / Table ronde

Desert A

Understanding Virtual Healthcare Experiences of Adults Living with Diabetes and their Caregivers in Alberta during the COVID-19 Pandemic

"COVID-19 accelerated the implementation of virtual care. Our diverse Patient and Community Engagement Research (PaCER) student team examined experiences and perspectives of adult Albertans living with diabetes and their care givers accessing virtual care to manage diabetes during the pandemic.

Participants in our qualitative study identified best practices and challenges in using virtual care to manage diabetes. Economic and physical relief were highlighted because they did not have to travel and experienced improved continuity of care. Areas for improvement included promotion and socialization of virtual care delivery options. Our results offer insights to develop and design a robust, accessible and inclusive healthcare experience."

- **Fobete Dingha Ngoh**, University of Calgary PACER
- **Shabnam Imam**, University of Calgary PACER
- **Veronika Kiryanova**, University of Calgary PACER
- **Atobrhan Godlu**, University of Calgary PACER

Block B / Bloc B***B7 - Workshop - Panel Presentation / Atelier - Présentation en panel***

Desert B

Filling the Post-Pandemic Worker Shortage: Building a More Inclusive Health Care Workforce

The COVID-19 pandemic has exacerbated worker shortages in the health care sector and Canada urgently needs more physicians, nurses, and allied health professionals. Canada needs to tap into underutilized and underemployed talent pools to fill this gap, namely equity-deserving groups, such as newcomers, Indigenous and racialized people, who have often been overlooked in the broader labour market. The series of presentations will highlight the barriers to the entry and integration of equity-deserving groups into the health care professions and introduce innovative solutions to facilitate these pathways.

- **Wendy Cukier**, Diversity Institute, Approaches to Integrating Internationally-Trained Health Care Workers
- **Ovie Onagbeboma**, Canadian Black Nurses Association, A Comparison of Licensure Processes across Jurisdictions for Internationally Educated Nurses
- **Ariadna Pauliuc**, Diversity Institute, Curated Resources to Mitigate the Social Determinants of Health and Strengthen Healthcare Access for Equity-Deserving Groups
- **Samar Mudawi**, Diversity Institute, elected Services for Healthcare Clients to Advance the Organizational EDI Journey and Address Internal and External Barriers for Equity-Deserving Individuals

Block B / Bloc B***B6 - Roundtable / Table ronde***

Desert A

Understanding Virtual Healthcare Experiences of Adults Living with Diabetes and their Caregivers in Alberta during the COVID-19 Pandemic

"COVID-19 accelerated the implementation of virtual care. Our diverse Patient and Community Engagement Research (PaCER) student team examined experiences and perspectives of adult Albertans living with diabetes and their care givers accessing virtual care to manage diabetes during the pandemic.

Participants in our qualitative study identified best practices and challenges in using virtual care to manage diabetes. Economic and physical relief were highlighted because they did not have to travel and experienced improved continuity of care. Areas for improvement included promotion and socialization of virtual care delivery options.

Our results offer insights to develop and design a robust, accessible and inclusive healthcare experience."

- **Fobete Dingha Ngoh**, University of Calgary PACER
- **Germán Méndez**, University of Calgary PACER
- **Veronika Kiryanova**, University of Calgary PACER
- **Atobrhan Godlu**, University of Calgary PACER

Block B / Bloc B***B7 - Workshop - Panel Presentation / Atelier - Présentation en panel***

Desert B

Filling the Post-Pandemic Worker Shortage: Building a More Inclusive Health Care Workforce

The COVID-19 pandemic has exacerbated worker shortages in the health care sector and Canada urgently needs more physicians, nurses, and allied health professionals. Canada needs to tap into underutilized and underemployed talent pools to fill this gap, namely equity-deserving groups, such as newcomers, Indigenous and racialized people, who have often been overlooked in the broader labour market. The series of presentations will highlight the barriers to the entry and integration of equity-deserving groups into the health care professions and introduce innovative solutions to facilitate these pathways.

- **Wendy Cukier**, Diversity Institute, Approaches to Integrating Internationally-Trained Health Care Workers
- **Ovie Onagbeboma**, Canadian Black Nurses Association, A Comparison of Licensure Processes across Jurisdictions for Internationally Educated Nurses
- **Sharon Broughton**, Diversity Institute
- **Fiona Deller**, Future Skills Centre, PLAR: Pathways and Prior Learning Assessment and Recognition for internationally trained and non-traditional applied health professionals

2:45 – 3:15 am**Break/Pause**

Visit the Exhibitors and Poster Presentations

Visite des Kiosques des exposants et des Présentations d'affiches

in front of the Deschenes room /
devant la salle Deschenes**3:15 pm – 4:30 pm****Block C / Bloc C****Concurrent sessions (workshops and roundtables)****Séances simultanées (ateliers et tables rondes)****Block C / Bloc C****C1 - Workshop - Panel Presentation / Atelier - Présentation
en pane**

Coulonge A

Lessons from the Pandemic: Communication Health Information and Building Health Literacy

A key take-away from the global pandemic was the unprecedented demand for health information and the critical role of public health agencies in calling on the public to modify behavior (s). Over the course of the pandemic, so many of us seemingly became 'overnight' experts on viruses and vaccines. Making health information accessible and user friendly represented a major challenge during the pandemic notably given the large circulation of misinformation. What has been referred to as the COVID-19 infodemic demonstrated the serious consequences of inadequate health literacy. This workshop will explore ways in which we can assess the degree of health literacy in Canada and speak about best practices in disseminating and transferring health information and knowledge.

- **Jack Jedwab**, President and CEO of Association for Canadian Studies

Block C / Bloc C**C2 - Workshop - Panel Presentation / Atelier - Présentation
en panel**

Wright

A Sense of Belonging During Transitions: Nursing Students Experiences Before, During, and Post-COVID-19 Pandemic

This panel presentation explores the experiences of nursing students in relation to their sense of belonging during various types of transitions. Drawing from three research studies, the panel delves into the factors that influence students' sense of belonging while transitioning between academic institutions, transitioning from in-person to online learning during the COVID-19 pandemic, and transitioning from online back to fully in-person learning environments post-pandemic. The panelists discuss the challenges and opportunities that impact nursing students' sense of belonging and aim to facilitate dialogue about the strategies for fostering a strong sense of belonging among nursing students during crucial transitional phases.

- Session Moderator / Chair: **Janet Montague**, Centennial College, Nursing Professor/Western University, PhD Candidate
- **Joyce Tsui**, Centennial College, Nursing Professor/York University, PhD Candidate, Nursing Students' Sense of Belonging Transitioning between Academic Institutions
- **Roya Haghiri-Vijeh**, York University, Assistant Professor, Nursing Students, ' Sense of Belonging in Online Learning Environments during the COVID-19 Pandemic
- **Krista Kamstra-Cooper**, Centennial College, Nursing Professor/Walden University, PhD Student, Nursing Students' Experiences of Belonging Transitioning from Online to In-person Learning Post-pandemic

Block C / Bloc C***C3 - Workshop - Panel Presentation / Atelier - Présentation en panel***

Desert A

The social determinants of health – With a specific focus on underrepresented communities through the Vista Risk Management Framework

"The post-Pandemic Canadian immigrant settlement system faces both positive opportunities and negative risks that require effective management strategies. This workshop introduces the ViStA Risk Management Framework, a practical strategic framework for managing risks both at national and organizational levels in the following three domains: 1) Risk management in social determinants of health and introduction of the ViStA
2) Positive and negative risk assessment of social determinants of health with a specific focus on immigrants and underrepresented communities through the ViStA
3) The positive and negative risk assessment of social determinants of health with a specific focus on access to social housing and emergency shelter"

- **Dr. Rick Nason**, Dalhousie University, Risk management in social determinants of health and introduction of the ViStA Risk Management Framework
- **Dr. Daniel O. Livvarcin**, Vectors Group, Positive and negative risk assessment of social determinants of health with a specific focus on immigrants and underrepresented communities through the ViStA Risk Management Framework
- **Athem Houssein**, University of Ottawa, Examining the risks associated with access to social housing and emergency shelter as social determinants of health for immigrant & underrepresented communities

Block C / Bloc C***C4 - Workshop - Panel Presentation / Atelier - Présentation en panel***

Deschenes

Ottawa Urban Indigenous Peoples Experiences during the First Year of COVID-19

To understand impacts of the pandemic on urban Indigenous people in Ottawa and the resources they mobilized. A mixed-method survey was used with an Indigenous Gender-based Analysis and Story-based methodology. Resilience and strength shone through in caring for self, others, and community while prioritizing children's wellbeing. Community members experienced cascading impacts of grief/loss including losing friends and/or family to overdose (31%) and COVID-19 (27%). Women with intersecting roles and responsibilities experienced unique stressors. Individual community members' resiliency mirrored urban Indigenous service capacity and strengthened the advocacy required to respond to colonization practices and systems through a global pandemic.

- **Joan Riggs**, Ottawa, Aboriginal Coalition (Government Policy)
- **Kyra Hagerty**, Ottawa Aboriginal Coalition
- **Kate Carroll**, Ottawa Aboriginal Coalition (Academic - Carleton University Master's Student)
- **Mikki Adams**, Inuuqatigii Centre for Inuit Children, Youth and Families

Block C / Bloc C***C5 - Workshop - Panel Presentation / Atelier - Présentation en panel***

Lievre

Low-barrier approach to offering culturally appropriate food, casework and mental health support: insights and opportunities

The pandemic has disproportionately impacted members of racialized communities, immigrants, refugees and seniors. In this presentation, we will explore the unique ways in which a community-based organization has sought to address inequalities, connected with isolated seniors and offered trauma-informed and culturally appropriate food, casework and mental health support. The presenters will introduce the service delivery model that Muslim Food Bank and Community Services Society has used in BC, Ontario, Saskatchewan and Manitoba to better address the needs of the communities that it serves.

- **Azim Dahya**, CEO, Muslim Food Bank and Community Services Society
- **Faisal Nahri**, Mental Health Counsellor and UBC Instructor of Classical Arabic

Block C / Bloc C***C6 - Workshop - Panel Presentation / Atelier - Présentation en panel***

Desert B

Lessons Learned: The Impact of the COVID-19 Pandemic on the Lives of Canadians

The series of presentations in this session come from The Survey on Employment and Skills. Initially, the project's purpose was to examine how Canadians were affected by changes in the nature of work but due to the COVID-19 pandemic, the survey was expanded to assess the pandemic's impact on Canadians' employment, earnings, and work environments. The project has now undergone five waves of data collection, spanning from Spring 2020 to March 2023. This session will explore some of the findings related to the impact of the COVID-19 pandemic on widening inequalities, physical and mental health, and working when sick.

- **Wendy Cukier, Diversity Institute**, Widening inequality: The effects of the pandemic on jobs and income
- **Christopher Zou**, Diversity Institute, Mind and body: Impact of the pandemic on physical and mental health
- **Andrew Parkin**, Environics Institute, Working when sick: How workplace regulations and culture will impact the post-pandemic recovery
- **Fiona Deller**, Future Skills Centre, The Survey on Employment and Skills: A National Database to Investigate the Impact of the COVID-19 Pandemic on Canadians

Block C / Bloc C***C7 - Workshop - Panel Presentation / Atelier - Présentation en panel***

Coulonge B

Health for All Partnership: Co-creating an innovative health clinic

As a result of the COVID-19 pandemic, our community partners (Mennonite New Life Centre of Toronto, St. Francis Table, Canadian Mental Health Association Peel Dufferin, and Peel Family Shelter) are seeing increasingly vulnerable clients for whom integrated, social and health services are needed. In this workshop, we will present our journey of co-creating the Health for All Partnership (HAP); a student-nurse led, faculty supervised outreach clinic aimed at providing responsive and accessible health care for underserved communities. We will also discuss the details of our community-academic social innovation including our partnership care model, evaluative plans and 'lessons learned' to date.

- **Francisca Burg-Feret**, Humber College, Overview of the Health for All Partnership
- **Tracy Docheff**, Mennonite New Life Centre of Toronto, Understanding our newcomer community's needs for health
- **Heidi Siu**, Humber College, Authentic partnership: The key to sustainability for community health

As of / À partir de 8:00 am

Registration / Visit the Exhibitors and Poster Presentations
Inscriptions / Visite des Kiosques des exposants et des Présentations d'affiches



in front of the Deschenes room /
devant la salle Deschenes

9:00 am - 10:30 am**Plenary Session**

Deschenes

Social Determinants of Health: Lessons Learned from the Pandemic

This plenary session will examine COVID-19 response efforts and the impact of the pandemic on the well-being of the population with a focus on social and economic inequities. How successful was Canada in addressing disparities particularly as they affected the most vulnerable groups in society? What significant gaps became more evident over the course of the pandemic and how successful were we in identifying them? Was there good collaboration between policy makers, researchers and civil society during the pandemic? What are the principle lessons learned? And are we prepared for future pandemics?

Déterminants sociaux de la santé : Leçons tirées de la pandémie

Cette séance plénière examinera les efforts de réponse à l'épidémie COVID-19 et l'impact de la pandémie sur le bien-être de la population, en mettant l'accent sur les inégalités sociales et économiques. Dans quelle mesure le Canada a-t-il réussi à s'attaquer aux disparités, en particulier celles qui touchent les groupes les plus vulnérables de la société ? Quelles sont les lacunes importantes qui sont devenues plus évidentes au cours de la pandémie et dans quelle mesure avons-nous réussi à les identifier ? Y a-t-il eu une bonne collaboration entre les décideurs, les chercheurs et la société civile pendant la pandémie ? Quels sont les principaux enseignements tirés ? Et sommes-nous prêts à faire face à de futures pandémies ?

- **Moderator / Modérateur : Jack Jedwab**, President and CEO, Metropolis Institute / Association for Canadian Studies / Président-directeur général, Institut Metropolis / Association d'études canadiennes
- **Dr. Joanne Liu**, MD, pediatric emergency medicine physician/associate Professor of Medicine at the Université de Montréal, Professor of Clinical Medicine at McGill University / previous International President of Doctors without Borders / médecin urgentiste pédiatrique, professeure agrégée de médecine à l'Université de Montréal, professeure de médecine clinique à l'Université McGill, ancienne présidente internationale de Médecins sans frontières
- **Professor Simon Bacon**, CIHR SPOR Chair in Innovative, Patient-Oriented, Behavioral Clinical Trials and FRQS Co-Chair in Artificial Intelligence and Digital Health for Health Behavior Change, Department of Health, Kinesiology, and Applied Physiology, Concordia University / Chaire SPOR des IRSC sur les essais cliniques comportementaux novateurs et axés sur le patient et chaire FRQS sur l'intelligence artificielle et la santé numérique pour le changement des comportements de santé, Département de santé, de kinésiologie et de physiologie appliquée, Université Concordia

10:30 – 11:00 am**Break/Pause**

Visit the Exhibitors and Poster Presentations

Visite des Kiosques des exposants et des Présentations d'affiches

in front of the Deschenes room /
devant la salle Deschenes**11:00 - 12:15 pm****Block D / Bloc D****Concurrent sessions (workshops and roundtables)****Séances simultanées (ateliers et tables rondes)****Block D/ Bloc D****D1 - Workshop - Panel Presentation / Atelier - Présentation
en panel**

Coulonge A

Resilient Youth

In 2020 at the height of COVID, OCISO launched the E-Homework and Tutoring Club. The Project aims to support learning recovery and renewal in response to the COVID-19 pandemic. Some of our students have been gravely affected and are experiencing learning loss and difficulties with retention. In the article Insights on Education at a Glance, author Andreas Schleicher reports that “{...} learning loss will lead to skill loss, and the skills people have relating to their productivity, gross domestic product (GDP) could be 1.5% lower on average for the remainder of the century. The present value of the total cost would amount to 69% of the current GDP for the typical” (The Impact of COVID-19 on Education)

- Session Moderator / Chair: **Donnielle Roman**, OCISO
- **Sali Abou Chahine**, OCISO, Supporting Youth during critical hours

The Mental Health of Immigrant Mothers in Canada

Psychosocial factors in ecological contexts can influence mental health. In this study, we examined the mental health of immigrant mothers outside post-partum while accounting for household contextual factors. We analyzed Statistics Canada's General Social Surveys 2016–2018 and found that immigrant mothers are more exposed to some household factors that could be unfavourable to mental health. Additionally, our results show higher odds of poor mental health for immigrant compared to Canadian-born mothers while controlling for household factors. Contextual and mental health disparities highlight the importance of further research on social risks for immigrant mothers as well as ongoing parental support programs after the postpartum period. Programs and research in this area can contribute to health equity.

- **Tasneem Khan**, PhD Candidate, School of Public Health Sciences, University of Waterloo

Block D/ Bloc D**D2 - Workshop - Panel Presentation / Atelier - Présentation en panel**

Lievre

Understanding the multidimensional impact of the COVID-19 pandemic on low-income precariously employed racialized immigrant women in East Danforth, Toronto

Since the start of the pandemic, South Asian Women's and Immigrants' Services (SAWIS), a community-based non-profit organization, has been leading community consultations with low-income precariously employed racialized immigrant women in East Danforth, Toronto, as part of its holistic service delivery and civic engagement. Findings revealed 1) overwhelming frustration as many felt 'left-behind' in the pandemic recovery 2) pressing need to support participation of marginalized communities in policy making. An anticipated outcome is an informed discussion around best practices for sustainable well-being of migrant women, by addressing socio economic determinants like employment, housing, food security, child care, and gender-based issues.

- **Syeda Yesmin**, South Asian Women's and Immigrants' Services

Block D/ Bloc D**D3 - Roundtable / Table ronde**

Coulange B

Addressing Vaccine Hesitancy among Latin American population in the Ottawa-Gatineau region

Even though there was strong evidence of the effectiveness of COVID-19 vaccination, substantial barriers to vaccine confidence and uptake remained, especially among equity-deserving communities; Latin American communities in Canada were no exception to this reality. We will share our experiences in implementing a communications campaign and identify key lessons learned, which may be useful to inform the development of vaccination strategies for other communities.

- **Elena Alvarado**, Between Two Worlds
- **Mara Fuentes**, Between Two Worlds-BTW

Work Precarity and Health among Canada's Long-term Care and Seniors' Home Workers During the Pandemic

The COVID-19 pandemic has highlighted several issues among healthcare workers in Canada's long-term care and seniors' (LTCS) homes, including labour shortages and precarious work conditions. There is a lack of information about LTCS home healthcare workers, and a limited understanding of the relationship between their working conditions and health. This research analyses data collected from Statistics Canada's Survey of Healthcare Workers Experiences During the Pandemic (2021) and will contribute to our understanding of the LTCS workforce, revealing differences between immigrant and non-immigrant workers' health and work precarity during the pandemic. Authors: Valentina Antonipillai, Edward Ng, Andrea Baumann, Mary Crea-Arsenio, Dafna Kohen

- **Valentina Antonipillai**, Statistics Canada & McMaster University

Block D/ Bloc D**D4 - Workshop - Panel Presentation / Atelier - Présentation en panel**

Deschenes

Impact of Anti-Asian Racism on Mental Health and Training our Frontline Workers

The resurgence of Anti-Asian Racism during the COVID-19 pandemic highlighted the inequitable access to supports and services to Canadian immigrants and racialized groups. This session will present learnings from the pilot of ACCT's national training program that ran from May - August 2023 and aimed to strengthen the capacity of settlement and community workers to address mental well-being issues caused by racial trauma among immigrants and racial minorities. This IRCC-funded project is a collaboration between over 10 settlement agencies, community service organizations, academics and social justice sector.

- **Calvin Hudson Hwang**, Director, "What Flowers They Bloom" and Founder, SUPRE
- **Paul Holley**, ACS-Metropolis Institute

Block D/ Bloc D**D5 - Workshop - Panel Presentation / Atelier - Présentation en panel**

Desert A

Addressing Homelessness during Pregnancy for Newcomers to Canada

Newcomers to Canada who are pregnant and homeless face unique challenges as they try to navigate the shelter system. This presentation will describe the results of a one day symposium held in Toronto, Canada in June 2023 that brought together over 60 people including newcomers to Canada with lived experience of homelessness during pregnancy, service providers, policy makers and researchers.

- **Barbara Chyzy**, Toronto Metropolitan University
- **Joon Lee**, Toronto Metropolitan University

Experience of the Pandemic: The South Asian Community in Canada

I focus on the South Asian community in Canada and how they experienced the pandemic and met the challenges. I ground my discussion in the theoretical foundation of transnationalism, and the literature on resilience and coping mechanisms. They adapted to the crisis and adjusted and had to face certain consequences.

- **Peruvemba Jaya**, University of Ottawa

Block D/ Bloc D**D6 - Workshop - Panel Presentation / Atelier - Présentation en panel**

Desert B

IMoving Towards Equity: Promising Practices in Recruiting and Retaining Internationally Educated Health Professionals (IEHPs)

The aging and low birthrate in Canada collided with the impact of COVID-19 on staff attrition due to accelerated retirement and burnout among many fields but in particular among healthcare providers. The result is an unprecedented global health human resource crisis. In this context, it is remarkable that less than 40% of internationally educated health professionals (IEHPs) in Canada are working in their trained profession. This panel presentation session will key success factors for employers to effectively, and ethically, recruit and retain IEHPs. In addition, this session will share the partnerships necessary between settlement and employers to ensure the social determinants of health are optimized for IEHPs as they integrate.

- **Catherine Penney**, National Newcomer Navigation Network

Addressing unemployment and job insecurity of Black Canadians and its impacts on their mental wellness, socio-economic prosperity and community vitality

As specific to the field of employment -before and Post-pandemic- there has been a higher level of unemployment among black Canadians as compared to other race groups or white Canadians which poses a revolving challenge to economic relevance and mental health of working-age individuals and dashes the hopes of Black Youth in their prime to dream big and aspire to attain economic prosperity. The proposed presentation will examine unemployment and job insecurity among Black Canadians within the Saskatchewan context and proffer forward-thinking strategies toward shaping organizational culture and creating cultural competence through the lenses of Race, Diversity, Equity, and Inclusion.

- **Anthony Olusola**, Truly Alive Youth and Family Foundation Inc.
- **Nuru Nyoni**, Truly Alive Youth and Family Foundation Inc.

Block D/ Bloc D**D7 - Workshop - Panel Presentation / Atelier - Présentation en panel**

Wright

Promoting health equity through community-based funding initiatives

The COVID-19 pandemic has highlighted interdependencies between population health and societal and economic well-being and drawn attention to the widespread and persistent inequities in Canadian society. It has also reaffirmed the need for collaborative action across sectors to address underlying drivers of health inequities. This workshop will highlight two community-based funding initiatives led by the Public Health Agency of Canada: The Promoting Health Equity: Intersectoral Action on the Social Determinants of Health and the Promoting Health Equity: Mental Health of Black Canadians Fund. The discussion will focus on the equity-focused principles that guide the work, including approaches to engagement and co-development with equity-deserving populations and capacity building for collaborative, multi-sectoral action on the social determinants of health and health inequities. We will also share lessons learned to inform future program and policy development to advance health equity

- Moderator: **Eméry Gahimbare**, Director, Social Determinants of Health Division at PHAC, Public Health Agency of Canada
- **Allison Nelson**, Manager, Intersectoral Action Fund, Social Determinants of Health Division, Public Health Agency of Canada
- **Christine Soon**, Manager, Mental Health of Black Canadians Fund, Social Determinants of Health Division, Public Health Agency of Canada
- **Duncan Field**, Associate Director, Learning Centre, Tamarack Institute
- **Jude-Mary Cenat**, University of Ottawa

12:15 - 1:30 pm
Lunch / Diner



Deschenes

1:30 - 2:45 pm
Block E / Bloc E
Concurrent sessions (workshops and roundtables)
Séances simultanées (ateliers et tables rondes)

Block E / Bloc E
E1 - Workshop - Panel Presentation / Atelier - Présentation en panel



Wright

Connecting Shelter and Well-Being: Exploring the Intersection of Housing and Health in Nunavut

Join us for a thought-provoking session that addresses the pressing challenges of housing, health, and wellness in Nunavut, a territory grappling with severe housing shortages, housing inadequacy, and unprecedented rates of overcrowding.

Participants will hear compelling presentations from a panel of experts and stakeholders featuring an analysis of health outcomes and housing conditions from the Indigenous Peoples Survey. Attendees will leave with a deeper understanding of the territory's complex challenges and a renewed commitment to developing sustainable housing solutions that lead to improved health outcomes for the Inuit in Nunavut.

This research is part of a larger initiative led by Nunavut Tunngavik Inc. and The Association for Canadian Studies, *The Nunavut Inuit Sustainable Housing Index (NISHI)*.

Moderator:

- **Tim Brown**, Assistant Director, Policy and Planning, Nunavut Tunngavik Incorporated

Presenters:

- **Cecille Lyall**, Housing and Homelessness Policy Analyst, Nunavut Tunngavik Incorporated
- **Christy Sinclair**, Infrastructure Policy Analyst, Nunavut Tunngavik Incorporated
- **Paul Holley**, Research Director, Association for Canadian Studies - Metropolis Institute

Block E / Bloc E**E2 - Workshop - Panel Presentation / Atelier - Présentation en panel**

Lievre

Innovation for Better Integration

Canada continues to increasingly become home for many newcomers. Rapid changing in the demography of the population has made it crucial for service providers to develop more culturally sensitive, trauma informed, inclusive, equitable and accessible service provision models that foster more inclusive and welcoming environments for diverse client groups. The Innovation for Better Integration project brings together key service providers in an ecosystem to share challenges and knowledge and explore innovative approaches to design a new service provision model that promotes social inclusion and better newcomers' integration in their new communities

- **Wessam Ayad**, EDI Solutions Manager
- **Lisa Macdonald**, KEYS

Block E / Bloc E**E3 - Roundtable / Table ronde**

Coulonge B

Boosting the healthcare workforce in Canada and the US by including internationally educated health care workers

Despite their credentials, multilingual skills, cross-cultural competencies, and years of experience, internationally trained health care workers in the United States and Canada face barriers impeding commensurate employment. This session will highlight state and provincial level measures supporting the inclusion of IEHW's in the U.S. and Canadian health care workforce.

- **Session Moderator / Chair: Karl Flecker**, WES
- **Fatima Sanz**, WES USA, Making change in the US
- **Dr Makini McGuire-Brown**, MBBS, MBA, PMP, PhD Candidate, Making change in the Canada
- **Natalia Pinto**, Medical doctor trained in Colombia

Block E / Bloc E**E4 - Workshop - Panel Presentation / Atelier - Présentation en panel**

Coulonge A

Engaging Employers in Activating Persons living with Disabilities into the Canadian Labour Market

Despite their desire and ability to work, persons living with disability face stigma and systemic labour market barriers, and Covid-19 has created additional barriers for labour force integration. Small and medium-sized enterprises are critical in Canada's economic recovery and need to develop business models and strategies to attract, retain, and grow a highly skilled, future-oriented workforce. This study identified challenges of SME employers on the societal, organizational, and individual level, such as disability stereotypes, lack of resources or knowledge, and more. The findings will inform future SMEs in supporting the development of more inclusive and equitable employment opportunities for everyone.

- **Dr. Wendy Cukier**, Professor, Founder and Academic Director, Diversity Institute, Toronto Metropolitan University
- **Dr. Matthew Edwards**, Senior Research Associate, Diversity Institute, Toronto Metropolitan University
- **Yamin Jahangir**, Senior Research Associate, Diversity Institute, Toronto Metropolitan University
- **Dr. Guang Ying Mo**, Director of Research, Diversity Institute, Toronto Metropolitan University
- **Mahadeo Sukhai**, VP, Research & International Affairs and Chief Accessibility Officer, CNIB

Block E / Bloc E**E5 - Workshop - Panel Presentation / Atelier - Présentation en panel**

Desert A

Disrupting Racism: Adopting Anti-racist Approaches across Nursing. A Panel Discussion

This panel discussion critically examines the need to disrupt racism and anti-Black racism and adopt anti-racist approaches across nursing education, nursing practice, and nursing leadership. The COVID-19 Pandemic has brought to light the pervasive presence of racism within these nursing domains and its detrimental impact on healthcare outcomes. Through an anti-racist lens, the panel delves into strategies aimed at dismantling systemic racism in nursing. By fostering dialogue and collaboration, the panel seeks to inspire actionable steps to create inclusive, equitable, and anti-racist nursing environments that prioritize the well-being of diverse populations and empower nursing students and professionals as we move forward post-pandemic.

- **Janet Montague**, Western University
- **Sherida Chambers**, Western University
- **Dionne Sinclair**, Western University

Block E / Bloc E**E6 - Workshop - Panel Presentation / Atelier - Présentation en panel**

Desert B

Supporting the Disaggregated Data Action Plan: Research at the intersection of social determinants of health and population groups in Canada

For years Statistics Canada has been providing Canadians with high-level statistics on a variety of health topics impacting people across the country. However, high-level statistics can hide key differences in the experiences of specific population groups. The COVID-19 pandemic highlighted how a single event can be experienced differently across various groups, thus revealing pre-existing social and economic inequalities. Canadians need data that is more detailed and granular providing information for different groups of people based on gender, race, age, income level, or a combination of these and other categories. Thus, Statistics Canada recently implemented the Disaggregated Data Action Plan (DDAP).

This session will present recent developments at Statistics Canada in support of the DDAP including new data standards, data tools and research on the social determinants of household food insecurity among persons with disabilities in Canada and the COVID-19 mortality among racialized populations in Canada.

- **Nicole Aitken**, Statistics Canada
- **Shikha Gupta**, Statistics Canada

Block E / Bloc E**E7 - Roundtable / Table ronde**

Deschenes

Improving Mental Health Services for Newcomers: Practical Strategies and Valuable Insights from the Pandemic Experience

This presentation showcases the adaptation of COSTI Immigrant Services' Newcomer Wellness Model, and CAMH's New Beginnings Clinic during the pandemic. It will share valuable lessons learned in service design, delivery, and impact, emphasizing challenges and opportunities of providing effective mental health services to newcomers, refugees, women and the 2SLGBTQIA+ community.

- **Vince Pietropaolo**, General Manager, Family and Mental Health Services, COSTI Immigrant Services
- **Norma Hannant**, Social Worker, Centre for Addiction and Mental Health
- **Yasmine Dossal**, Director Social Services
- **Samina Sami, CEO**, COSTI Immigrant Services
- **Asma Sleihat**, Social Worker at the Centre for Addiction and Mental Health

2:45 – 3:15 pm**Break/Pause**

Visit the Exhibitors and Poster Presentations

Visite des Kiosques des exposants et des Présentations d'affiches

in front of the Deschenes room /
devant la salle Deschenes**3:15 pm – 4:30 pm****Block F / Bloc F****Concurrent sessions (workshops and roundtables)****Séances simultanées (ateliers et tables rondes)****Block F / Bloc F****F1 - Roundtable / Table ronde**

Coulonge A

COVID and the Classroom; An Interdisciplinary Discussion on Post Secondary Learning Challenges

This roundtable will be facilitated by two academics from two different disciplines and two different provinces who have significant experience in supporting students' transitions in learning about the self, and their subject matters in post secondary settings. While some similarities emerged, both instructors noted stark differences in coping based on a variety of vulnerabilities. Facilitators bring experience from working in governmental and non governmental non profit settings, as well as within academia, allowing for a fulsome conversation with policy makers, service providers and social researchers. Lessons learned here have implications for wider knowledge dissemination and learning across diverse settings in academia and healthcare.

- **Naomi Levitz Shobola**, University of Windsor

Block F / Bloc F**F2 - Workshop - Panel Presentation / Atelier - Présentation en panel**

Coulonge B

S'intégrer en temps de crise sanitaire. Parcours migratoires et défis d'intégration des immigrants récents installés dans la région d'Ottawa-Gatineau

Durant la pandémie liée à la COVID-19, l'immigration et les immigrants récents ont été mobilisés comme une des « ressources » majeures pour faire face aux besoins imminents en matière d'interventions de première ligne.

Pendant que les immigrants apportaient ce « travail essentiel », leurs propres besoins d'intégration étaient peu ou pas atteints en raison des contraintes liées à la pandémie. Dans ce panel, nous présenterons les résultats de recherches académiques récentes, ainsi que des initiatives communautaires de la région d'Ottawa-Gatineau qui documentent les défis liés à l'intégration en contexte pandémique et apportent des pistes de solutions.

- **Sonia Ben Soltan, Université d'Ottawa**, École de service social, Les défis de l'intégration des immigrants récents dans la région d'Ottawa Gatineau en contexte pandémique & Les intervenants « de l'intérieur » : l'importance de la contribution des intervenants d'origine immigrante dans le secteur de l'établissement des nouveaux arrivants
- **Nadia Abu Zahr**, Université d'Ottawa, École de développement international et mondialisation, Les intervenants « de l'intérieur » : l'importance de la contribution des intervenants d'origine immigrante dans le secteur de l'établissement des nouveaux arrivants
- **Véronique Plouffe**, Université d'Ottawa, Institut d'études féministes et de genre, Les intervenants « de l'intérieur » : l'importance de la contribution des intervenants d'origine immigrante dans le secteur de l'établissement des nouveaux arrivants
- **Stéphanie Luxama**, Centre des services communautaires Vanier et Université d'Ottawa, École de service social, Obstacles à l'intégration socioéconomique des immigrantes haïtiennes dans la région d'Ottawa-Gatineau en contexte pandémique
- **Renée El Kaba**, AFIO, Intervenir auprès d'immigrantes âgées en contexte pandémique

Block F / Bloc F**F3 - Workshop - Panel Presentation / Atelier - Présentation en panel**

Deschenes

From COVID-19 related data to behavioural intervention: how should we do it

Since the announcement of the COVID-19 pandemic in 2020, the number of studies aimed at describing the population's attitudes, mental health, physical health and behaviours have been increasing. Certain groups seem to have been impacted differently and more severely (e.g., healthcare professionals, women, younger, with families, etc.). Now, this wealth of data needs to be applied. The aim of this workshop will be to present the data pathway from the capture of nationally representative data, collaboration with health centres to optimize intervention implementation, and finally to the development of behavioural interventions.

- Session Moderator / Chair: Kim Lavoie, , Université du Québec à Montréal
- **Frédérique Deslauriers**, Université du Québec à Montréal, *Impacts on mental and physical health as a function of socioeconomic status during the COVID-19 pandemic among Canadian: results from the iCARE study*
- **Camille Léger**, Université du Québec à Montréal, *Determinants of adherence to preventive behaviours and vaccines during the COVID-19 pandemic: results from the iCARE study.*
- **Vincent Gosselin Boucher**, University of British Columbia, *Impact of the pandemic on healthcare worker mental health: results from an app-based exercise randomized controlled trial.*
- **Anda Dragomir**, Concordia University, *Advanced methods for behavioural intervention design: using knowledge user-driven processes to develop effective interventions*

Block F / Bloc F**F4 - Workshop - Panel Presentation / Atelier - Présentation en panel**

Desert A

Cultivating Inclusive Communities: Embracing Reciprocity in Refugee Support

Our community-engaged research addresses the well-being of newcomer families in Canada. We draw on insights from our seven-year collaboration with the Victoria Immigrant Refugee Centre Society to discuss safe and inclusive resettlement support for refugees. Specifically, we present data from interviews with refugees, settlement professionals, private sponsors, and community residents; as well as my master's research, which explored relationships between refugees and Canadian private sponsors (ranging from paternalistic to reciprocal). Across studies, experiences shared emphasize the importance of transitioning from one-sided helping relationships to promoting equitable and reciprocal connections for newcomers in their receiving communities.

- **Emile Longtin**, University of Victoria

Block F / Bloc F**F5 - Workshop - Panel Presentation / Atelier - Présentation en panel**

Lievre

Spark The Connections!: Inclusive Queer and Transgender Immigrant Spaces

The East Coast Kitchen Parties by and for LGBTQIA+ Newcomers Project newcomer LGBTQIA+ is an innovative project designed to address the social, cultural, and systemic challenges that members of the 2SLGBTQIA+ communities face in accessing mental health and addictions support, especially exacerbated during the COVID-19 pandemic. Join us to explore how we co-created sustainable programming through collaboration with partners and consultations with LGBTQIA+ immigrants and newcomers to develop culturally and contextually supportive social networks.

- **Liane Khoury**, Mental Health and Addictions, Nova Scotia Health, Mental Health and Addictions Best Practices: Queer and Transgender Immigrants Through Food

Block F / Bloc F**F6 - Workshop - Panel Presentation / Atelier - Présentation en panel**

Desert A

Canadian Community Health Survey (2016 to 2021)

In this session, researchers with The Canadian Index on Measuring Integration (CIMI) will provide an overview of health-related outcomes for immigrants and non-immigrants from the Canadian Community Health Survey (2016 to 2021). A sex and gender-based analysis+ (SGBA+) will be used to reveal gender gaps across key health indicators to include access to healthcare, physical and mental health, life satisfaction and overall well-being.

- **Paul Holley**, Director of Research, Association for Canadian Studies and Metropolis Institute
- **Ravindra Shrestha**, Research Manager, Association for Canadian Studies and Metropolis Institute
- **Michele Vitale**, Research Analyst, Association for Canadian Studies and Metropolis Institute

Poster Presentations

Présentations d'affiches

P1

Understanding the immigrant pay gap among allied health professionals in Canada

Research indicates university-educated immigrants earn less than their Canadian-born counterparts; however, evidence is scant on allied health professionals (AHPs), critical contributors to the healthcare system. This study examines the migrant pay gap among dentists, pharmacists, physiotherapists and other AHPs using population census data. The proportion of AHPs aged 25-54 who migrated in adulthood was 14.0% in 2016, up from 12.8% in 2006. Across professions, adult migrants earned 10–24% less, after adjusting for gender, qualifications, visible minority status, rurality and other characteristics. Programs and policies are needed to support migrant health workers achieve full economic inclusion.

- **Neeru Gupta**, University of New Brunswick

P2

Neighbourhood remoteness and marginalization as social determinants of potentially avoidable cardiometabolic-related hospitalization

There is need to better understand how neighbourhood socioenvironments may influence the risk of potentially avoidable hospitalization. This study examined the role of residential characteristics on cardiometabolic-related admissions among a cohort of Canadian adults with an underlying chronic condition.. Sourcing and linking multiple person-level and area-based datasets, the analysis indicated significant associations between neighbourhood social deprivation and the degree of community remoteness with hospitalization risk. The results demonstrate that contextual characteristics contribute to hospital-based health inequities even in the Canadian context of universal healthcare coverage. Authors: Neeru Gupta, University of New Brunswick, Dan L. Crouse, Health Effects Institute, Pablo Miah, University of New Brunswick, Tim Takaro, Simon Fraser University

- **Neeru Gupta**, University of New Brunswick

P3

A qualitative study exploring the impact of the medical licensing process on internationally trained physicians' mental health

Internationally trained physicians (ITPs) are a diverse group of medical practitioners who completed their medical education and/or training outside of Canada or the United States. While their education is favoured by Canada's immigration system, they are excluded from the medical profession due to systemic barriers to licensure. To explore the impact of the Canadian licensing process on ITPs' mental health, we interviewed 11 ITPs. We interviewed 11 ITPs trained in the Global South. From these interviews, we found that exclusionary licensing policies influence their mental health as they experience discrimination, regret, uncertainty, and negative impacts on their professional identity. Authors: Simran Purewal, Simon Fraser University Faculty of Health Sciences, Paola Ardiles, Simon Fraser University Faculty of Health Sciences, Evelyn Encalada Grez, Simon Fraser University Department of Labour Studies,, Nada El Masry , RADIUS Simon Fraser University, Yara Younis, RADIUS Simon Fraser University.

- **Nada El Masry** , RADIUS Simon Fraser University
- **Yara Younis**, RADIUS Simon Fraser University

Poster Presentations

Présentations d'affiches

P4

“Whatever issues I had before were exacerbated by COVID”: The pandemic’s impacts on mental health—and the social determinants of mental health—for 2SLGBTQI people in Canada

COVID-19 exacerbated mental health disparities faced by 2SLGBTQI individuals in Canada. For example, measures such as self-isolation heightened overall anxiety levels for 2SLGBTQI people. To address these disparities, we aimed to understand the pandemic’s impacts on social determinants of mental health (e.g., access to services, racial background, gender, sexual orientation). Among many insights, access to mental healthcare was widely impacted among 2SLGBTQI people, especially for intersectionally marginalized participants.

Although systemic changes need to occur to address 2SLGBTQI mental health needs, the rise of telehealth services and growth of peer support networks holds promise for these communities.

- **Kim Seida, Egale Canada**
- **Félix Desmeules-Trudel, Egale Canada**

P5

Compassionate Virtual Care for Migrants and Refugees: A Scoping Review

The COVID-19 pandemic resulted in the rapid digitization of healthcare services. However, the benefits of digital technologies such as virtual care were not experienced equally for certain populations, including migrants and refugees. To support equitable access to virtual care that is empathetic and responsive to the needs and lived experiences of migrants and refugees, it is crucial to understand what compassionate virtual care means for these populations. This presentation will report findings from a global scoping review of literature on the experiences of migrants and refugees with virtual care and identify strategies for delivering compassionate virtual care for marginalized populations.

- **Emily Ha, Women's College Hospital**
- **Marlena Dang Nguyen, Women's College Hospital**
- **Ibukun Abejirinde, Women's College Hospital**
- **Isabelle Choon-Kon-Yune, Women's College Hospital**
- **Kyla G Lee, Women's College Hospital**

P6

The impact of evolving policing practices on the health and safety of sex workers who use drugs in Vancouver, BC: A qualitative study

Over the past decade, Vancouver, BC has been the site of evolving legislative approaches and policing strategies regulating sex work and drug use. This qualitative study aimed to explore how evolving policing and legislative approaches to regulate sex work and drugs use intersect to shape safety, and harm reduction strategies for women and gender-diverse sex workers who use drugs. Results from 31 participants indicated that even ‘progressive’ policing continued to jeopardize the occupational health of sex workers, limited access to harm reduction services, and allowed for sexual and physical abuse and harassment from police, which was exacerbated for Indigenous women, women living precariously, and those with mental health challenges.

- **Emma Stirling-Cameron, University of British Columbia**

Poster Presentations

Présentations d'affiches

P7

Survey Recruitment Methods with Older Immigrant Participants

Phase 1 of the Inclusive Communities for Older Immigrants project included survey data collection on social isolation experiences of Punjabi, Arabic, and Mandarin-speaking older immigrants in nine Canadian cities. Strategies involving collaboration with cultural/linguistic community members, and service providers were essential to participant recruitment success. COVID-19 restrictions, individual factors (e.g., limited technological knowledge), time of data collection, costs of travel to interview locations, and honoraria options represented key challenges to overcome. Observing trends in survey participation can provide insight for future studies involving social determinants of health of older immigrants in urban/suburban/rural settings. Co-Authors: Sepali Guruge, Aidan Boucher, Kerith Paul, Bharati Sethi, Christine Walsh, Hongmei Tong, Jie Zhang, Jordana Salma, Kateryna Metersky, Marie-Emmanuelle Laquerre, Maryse Soulieres, Melissa Northwood, Olive Wahoush, Sandeep Agrawal, Satwinder Bains, Sonia Ben Soltane, Souraya Sidani, Zhixi Zhuang, Amina Mezdour, Madison Wilson, Prince Ekoh.

- **Sepali Guruge**, Toronto Metropolitan University

P8

A proposal to explore home care staffs' knowledge and perceptions of refugees' eligibility for home care services

"The profound impact of the COVID-19 pandemic on refugees underscores the differentiated experience of refugees from Canadian-born counterparts and other migrants. In post-pandemic recovery, home care will play a critical role in health care systems. Evidence is needed to facilitate home care access by refugees. This proposed research will use a participatory social justice mixed methods exploratory sequential research design. The proposed objectives are to:

- Understand how home care staff make decisions about refugees' eligibility;
- Determine where staff obtain the information to make these decisions and how they form perceptions; and
- Identify ideas for addressing the current understandings and perceptions."

- **Tabitha Hamp**, Queen's University

P9

The Experiences of Mother- Child Separation in the Context of Homelessness in High Income Nations

Mothers experiencing homelessness are among the most vulnerable population. Due to their homelessness and related issues, many are often separated from their children. While there is significant research on parenting in homelessness, much less is known about the experience of child-separation while mothering. We asked: What is the breadth of knowledge on child separation while mothering through the experience of homelessness post-pandemic in high-income countries? We used the Joanna Briggs Institute technique for systematic scoping reviews and the PRISMA-ScR checklist. Our findings demonstrate that state-surveilled, racialized, health-challenged, single-parent, and generationally poor mothers are at particular risk of child separation.

- **Olayinka Ariba**, Western University

Poster Presentations

Présentations d'affiches

P10

Human Well-Being and Pets During the COVID-19 Pandemic: A nuanced Account

During the COVID-19 pandemic, as media outlets depicted the benefits of their companionship for human wellness, individuals turned to pets to help combat loneliness and stress. To examine the associations between pet ownership and psychological well-being during the pandemic within groups of different socioeconomic strata, a nationally representative survey was conducted among 2424 Canadian adults by the firm Léger. We found that pet ownership was associated with lower well-being for those occupying typically caring roles (e.g. women) and experiencing situations of disadvantage during the pandemic, possibly by adding to existing levels of strain in this context. Our findings provide nuanced insights into the role of human-pet relationships as a social determinant of health, and contrast with the popular belief that pets benefited human wellness during the COVID-19 pandemic.

- **Christophe Gagné**, Université du Québec à Montréal (UQAM)

P11

Housing and Health of Refugees and Asylum Seekers in Canada

This cross-sectional study examines the relationship between housing and the physical and mental health of refugees and asylum seekers (RAS) in Canada. Utilizing the WHOQOL-BREF survey, the study investigates the association between living in social housing and shelters and the well-being of RAS. The research aims to provide insights into the impact of housing on the health of this vulnerable population, serving as a baseline for future research and guiding policy development for appropriate health services. By addressing the social determinants of health, this study contributes to understanding how housing conditions influence the overall

- **Khater Muhajir**, Lakehead University

P12

Optimizing current and future pandemic preparedness: Forging a public-informed research strategy using an integrated knowledge translation approach

Given the current levels of mistrust and doubt due to contradictory messages emanating from government and policymakers, there is an urgent need to regain the public's trust to optimize our COVID-19 responses and future pandemic preparedness. One way to achieve this is by engaging with the public to set a research strategy that is aligned with their priorities and concerns. The objective of this study is to identify the COVID-19 related questions and concerns of Canadians and use this data to inform a Canadian research strategy. The James Lynd Alliance and e-Delphi methods will be used to collect, synthesize, and prioritize the data. Results will form the basis of a policy brief that will be presented to governments across Canada.

- **Frédérique Deslauriers**, Université du Québec à Montréal

Poster Presentations

Présentations d'affiches

P13

Employment Training Post-Pandemic

Accelerating Growth in Labour Initiatives with TechnologY (AGILITY)

Is a training program for unemployed and marginally employed Francophone newcomers to Canada with the purpose of Increasing employability through skill development and career exploration, as well as creating pathways to employment through connections with Francophone agencies, post secondary institutions, mentors, employers, and other employment programs.

AGILITY began under unprecedented circumstances, namely post-pandemic, however and despite all the challenges and disinformation related to vaccination, we were able to restructure the program and to successfully deliver 3 sessions in 12 months

- **Wedded Sakhri**, ANAF